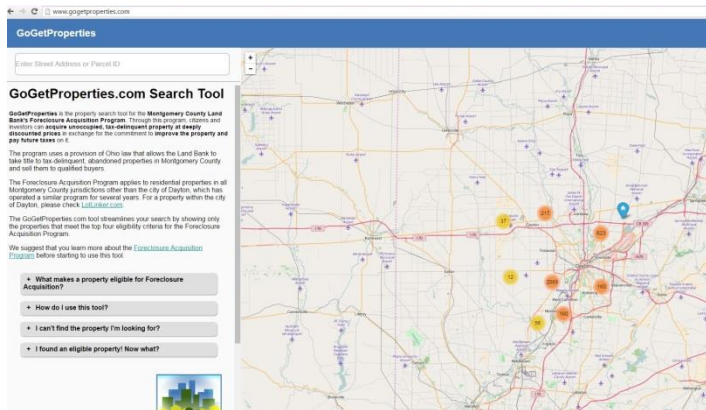


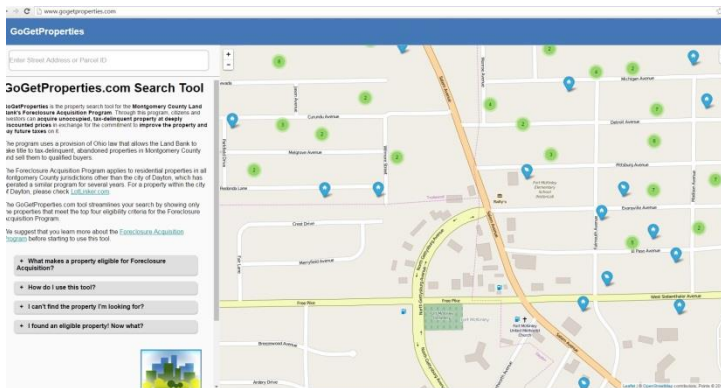


HOW TO FIND TAX DELINQUENT PROPERTIES IN MONTGOMERY COUNTY

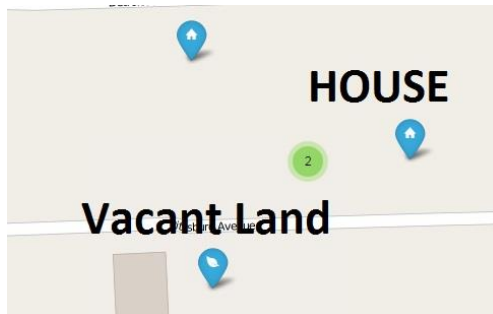
1. GO TO WWW.GOGETPROPERTIES.COM



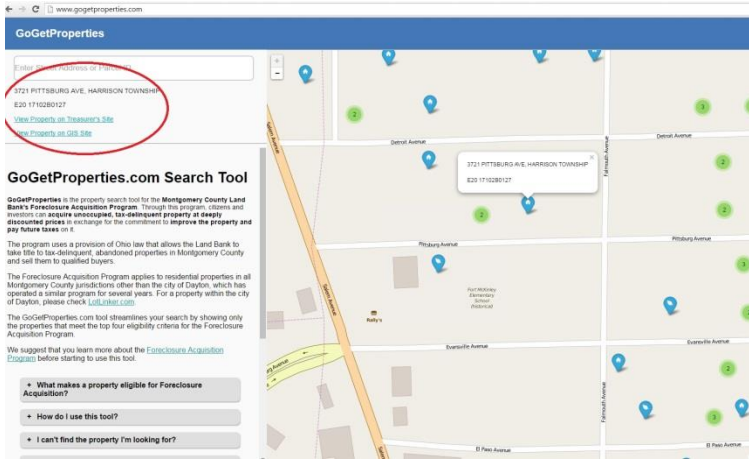
2. ZOOM IN ON THE MAP AND LOCATE THE AREA YOU WOULD LIKE TO RESEARCH



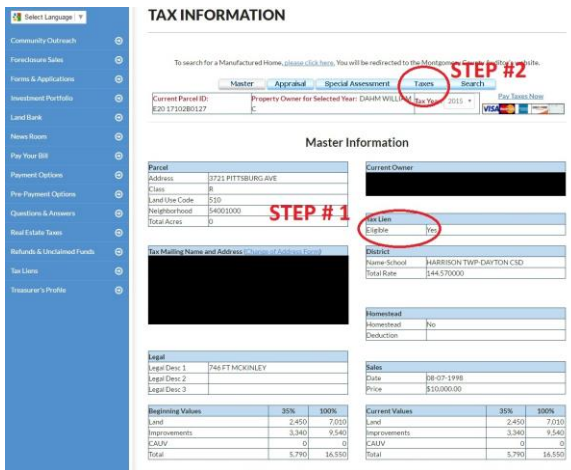
3. CLICK ON THE HOUSE ICON FOR A HOUSE OR THE LEAF FOR VACANT LAND



4. ONCE YOU CLICK ON THE ICON, LOOK ON THE LEFT HAND SIDE AND CLICK ON "VIEW PROPERTY ON TREASURER'S SITE"



5. AFTER GOING TO THE TREASURER'S WEBSITE, LOOK UNDER "TAX LIEN" TO MAKE SURE THE PROPERTY IS ELIGIBLE, IF SO, CLICK THE "TAXES" TAB TOWARDS THE TOP OF THE PAGE.



6. ONCE YOU CLICK ON "TAXES" YOU WILL SEE ALL OF THE TAX INFORMATION FOR THE PROPERTY. SCROLL DOWN TOWARDS THE BOTTOM OF THE PAGE UNDER THE "GRAND TOTALS" SECTION AND LOOK TO SEE IF THERE IS AN AMOUNT DUE. FOR TAX DELINQUENT PROPERTIES, AN AMOUNT HAS TO BE SHOWN.

Year	Parcel	Charge	Adjustments	Recesses	Amount Due
2012	01100	\$224.92	\$58.00	\$0.00	\$282.92
2012	17777	\$22.27	\$4.26	\$0.00	\$26.53
2012	21000	\$24.62	\$1.65	\$0.00	\$26.27
2012	21850	\$573.44	\$42.92	\$0.00	\$616.36
2012	41100	\$1.01	\$0.26	\$0.00	\$1.27
2012	41100	\$644.02	\$206.28	\$0.00	\$850.30
2013	17777	\$22.02	\$3.84	\$0.00	\$25.86
2013	21000	\$12.48	\$1.84	\$0.00	\$14.32
2013	21850	\$584.23	\$42.60	\$0.00	\$626.83
2013	41100	\$1.01	\$0.26	\$0.00	\$1.27
2013	41100	\$566.79	\$177.70	\$0.00	\$744.49
2014	17777	\$21.79	\$3.34	\$0.00	\$25.13
2014	21000	\$12.24	\$1.64	\$0.00	\$13.88
2014	21850	\$583.94	\$38.16	\$0.00	\$622.10
2014	41100	\$1.01	\$0.26	\$0.00	\$1.27
2014	41100	\$569.16	\$27.22	\$0.00	\$596.38
2015	11100	\$0.00	\$4.94	\$0.00	\$4.94
2015	17777	\$0.00	\$1.06	\$0.00	\$1.06
2015	11200	\$0.00	\$1.22	\$0.00	\$1.22
2015	21000	\$0.00	\$63.00	\$0.00	\$63.00
2015	21850	\$0.00	\$19.22	\$0.00	\$19.22
2015	41100	\$0.00	\$0.13	\$0.00	\$0.13
2015	41100	\$0.00	\$30.69	\$0.00	\$30.69
Sub-Total		\$9,411.51	\$2,877.67	(\$971.24)	\$11,317.94

Year	Parcel	Charge	Adjustments	Recesses	Amount Due
2015	11100	\$0.00	\$0.00	\$0.00	\$0.00
2015	17777	\$0.00	\$0.00	\$0.00	\$0.00
2015	11200	\$0.00	\$0.00	\$0.00	\$0.00
2015	21000	\$0.00	\$0.00	\$0.00	\$0.00
2015	21850	\$0.00	\$0.00	\$0.00	\$0.00
2015	41100	\$0.00	\$0.00	\$0.00	\$0.00
2015	41100	\$0.00	\$0.00	\$0.00	\$0.00
Sub-Total		\$0.00	\$0.00	\$0.00	\$0.00

Grand Totals	Charge	Adjustments	Recesses	Amount Due
Grand Totals	\$10,699.61	\$2,877.67	(\$971.24)	\$12,606.04

Project Number	Description
11100	D. NEW DELCO CHEVY
17777	JAC FILE
11000	LI LIGHTING
11500	WEED/MOWING/CLEANUP
21000	TRUCK TRASH COLLECTION
41100	INCLIPING/CURBWER PRESSURE

7. **AFTER YOU SEE THE AMOUNT, CLICK ON THE "PAYMENTS" LINK RIGHT BESIDE "AMOUNT DUE" IN THE GRAND TOTALS SECTION.**

Sub-Total	\$9,411.51	\$2,877.87	(\$971.76)	\$11,317.62
-----------	------------	------------	------------	-------------

5/10% Payments					
Tax Year	Real/Project	Charge	Adjustments	Payments	Amount Due
Sub-Total		\$0.00	\$0.00	\$0.00	\$0.00

Grand Totals				
	Charge	Adjustments	Payments	Amount Due
Grand Totals	\$10,939.83	\$2,877.87	(\$971.76)	\$12,845.94

* Payments Posted thru May 3, 2016

Project Number	Description
11100	D. SEW DELQ CO SEWER
11777	APC FEE
21200	LT. LIGHTING
21500	WEED MOWING / CLEAN UP
21850	TR COL TRASH COLLECTION
41100	MCD/AP MCD/AQUIFER PRES SUBD

8. **MAKE SURE A PAYMENT HAS NOT BEEN MADE IN THE PAST YEAR.**

TAX INFORMATION		
Payments by Business Date		
Business Date	Amount	
02-19-1999	\$177.48	
07-13-1999	\$163.03	
02-29-2000	\$173.77	
07-18-2000	\$102.77	
02-22-2001	\$210.03	
07-17-2001	\$104.10	
02-26-2002	\$264.64	
07-22-2002	\$106.86	
07-19-2004	\$179.96	
09-02-2004	\$42.22	
10-04-2004	\$42.22	
03-08-2005	\$64.89	
05-11-2005	\$64.89	
06-14-2005	\$64.89	
07-19-2005	\$182.55	
09-02-2005	\$64.89	
10-18-2005	\$64.89	
11-14-2005	\$64.89	
01-03-2006	\$64.89	
02-22-2006	\$291.24	
07-05-2006	\$64.89	
08-21-2006	\$100.00	
Total:	(\$2,789.77)	

[Click here to go back to Taxes Screen](#)

CONGRATULATIONS! YOU FOUND A TAX DELINQUENT PROPERTY!

For more information about how to apply for the property please visit our website at

www.mclandbank.com